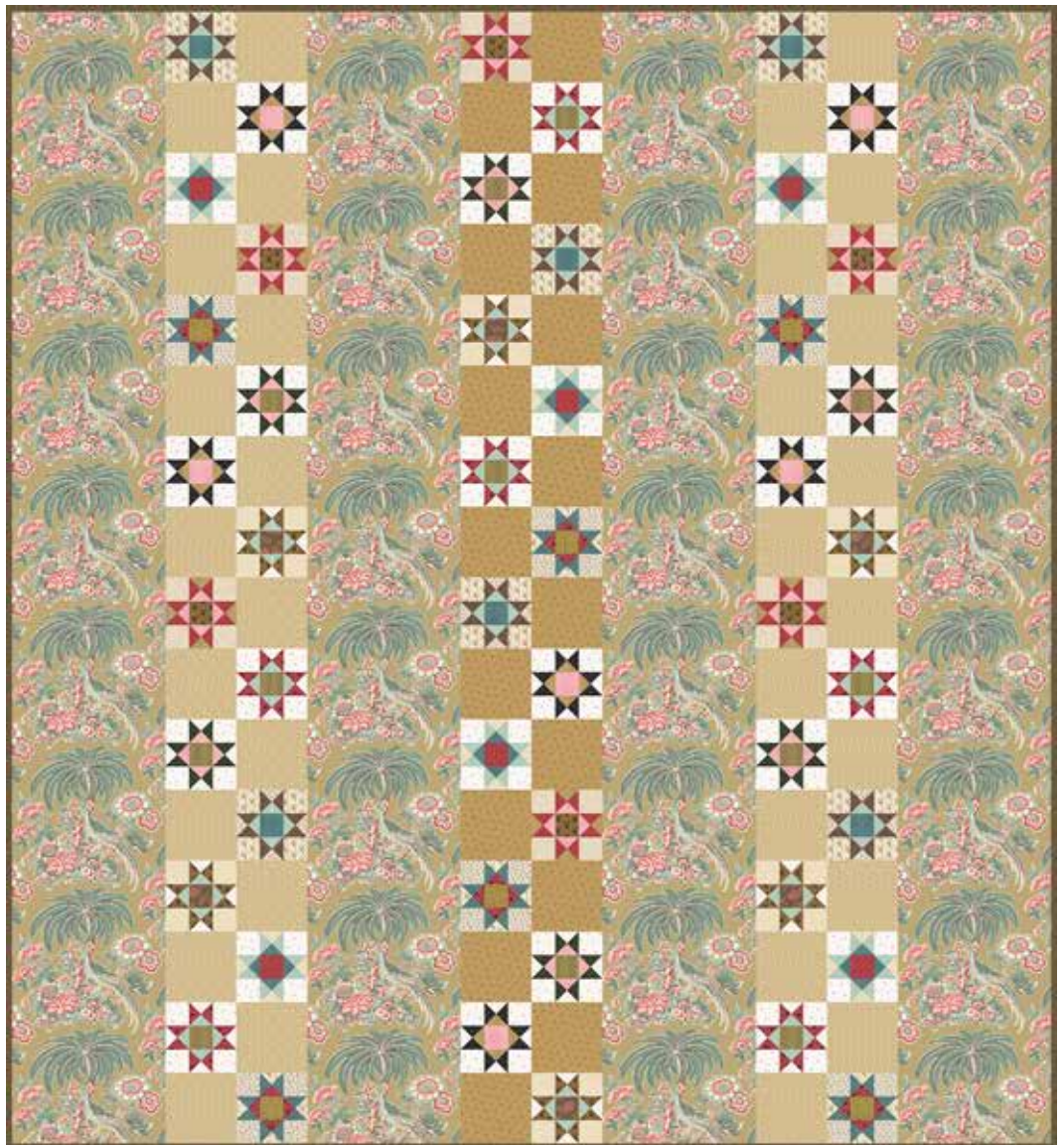


# Pheasant & Traceries

BY MARGO KRAGER



Starry Paths Quilt  
designed by:  
**Mary Robbins**

Quilt Size: **88" x 96"**

[andoverfabrics.com](http://andoverfabrics.com)



## About Pheasant & Traceries

I was taking a class on Gothic Architecture (St. Olaf College, Northfield, MN) and was inspired by the writings/illustrations of A.C. Pugin, *Specimens of Gothic Architecture 1821-23*. — Margo Krager

andover

•  
• makower uk  
• *The Henley Studio*  
•

Free Pattern Download Available

1384 Broadway New York, NY 10018  
Tel. (800) 223-5678 • [andoverfabrics.com](http://andoverfabrics.com)

# Starry Paths Quilt



Introducing Andover Fabrics new collection: **PHEASANT & TRACERIES** by Margo Krager  
Quilt designed by Jean Ann Wright

Quilt finishes 88" x 96"  
48 Blocks: 6" x 6"

*Structured elegance abounds in this beautiful queen-size quilt. The stars flow from the top to the bottom in stair steps, framed by the ornate print with pheasants and palm trees. Follow the quilt's planned blocks, or create your own masterpiece by switching fabrics as you desire.*

## Cutting Directions

**Note:** Read assembly directions before cutting patches. All measurements are cut sizes and include 1/4" seam allowances. A fat 1/4 is an 18" x 21"-22" cut. WOF designates the width of fabric from selvedge to selvedge (approximately 42" wide).

### Pheasant Prt.

Fussy-cut (4) panels 13 1/2" x 100" (read Step 4)

### Dk. Brown

Cut (10) strips 2 1/2" x WOF for binding

### Tan #1

Cut (32) squares 6 1/2" x 6 1/2"

### Tan #2

Cut (16) squares 6 1/2" x 6 1/2"

### Cream

Cut squares 3 1/4" x 3 1/4", cut in half diagonally twice to make quarter-square triangles as needed for your color plan (read Step 1)

Cut squares 2 1/2" x 2 1/2", cut in groups of 4

### 5 Lights

Cut squares 3 1/4" x 3 1/4", cut in half diagonally twice to make quarter-square triangles as needed for your color plan  
Cut squares 2 1/2" x 2 1/2", cut in groups of 4

### 13 Med./Dk. Total patches needed:

Cut (144) squares 3 1/4" x 3 1/4" cut in half diagonally twice to make 576 quarter-square triangles (in groups of 4 and 8 triangles)

Cut (48) squares 2 1/2" x 2 1/2" for block centers as needed for your color plan

### Backing

Cut (3) panels 32" x 104", pieced to fit quilt top with overlap on all sides

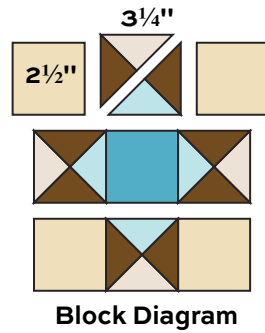
## Fabric Requirements

	Yardage	Fabric	
<b>Pheasant Prt.</b>	setting	6 yards	8292-N
<b>Dk. Brown</b>	binding	3/4 yard	8297-N
<b>Tan #1</b>	background	1 3/8 yards	8295-L
<b>Tan #2</b>	background	3/4 yard	8298-Y
<b>Cream</b>	blocks	1/2 yard	8146-L
<b>5 Lights</b>	blocks	fat 1/4 yard ea.	8296-L
	8144-N	8151-L	8153-N
			8159-L
<b>13 Med./Dk.</b>	blocks	fat 1/4 yard ea.	8293-N1
	8296-N	8298-N	8299-N
	8299-Y	8146-R	8147-K
		8148-G	
	8150-G	8154-R	8158-E
		8158-T	
<b>Backing</b>		8 2/3 yards	8294-N

# Starry Paths Quilt

## Making the Quilt

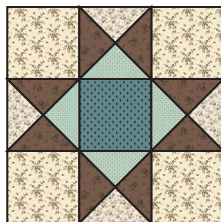
1. In the quilt shown, each block coloring is used in 6 blocks. Refer to the block diagrams for fabric placement, or feel free to mix and match the prints as you wish, placing the light prints in the background patches that touch the block's edges. The cream print is used in more blocks than the other lights, so additional yardage is given for that print. Cut light 2½" squares in groups of 4 as needed for each block. Cut medium/dark quarter-square triangles in groups of 4 for the patches touching the center square, and in groups of 8 for the star points.
2. Referring to the block diagram, join 2 medium/dark star point triangles, one light triangle, and a second medium/dark triangle to make a quarter-square triangle unit. The unit should measure 2½" from edge to edge. If it doesn't, adjust your sewing line and pressing techniques. Make 4 alike for the block. Join the triangle units with the medium/dark center square and 4 light squares to make the block. Make a total of 48 blocks.



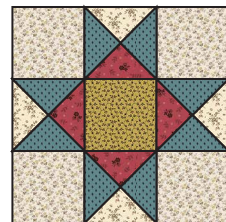
3. Refer to the quilt diagram. Note that in the quilt shown, 2 of each kind of block are arranged in each of the 3 rows. On a large flat surface or design wall, position 16 blocks and 16 tan #1 squares in a vertical row. Arrange a second vertical row using 16 blocks and 16 tan #2 squares. Arrange a third row using blocks and tan #1 squares. Be sure to scatter the darker stars across the quilt. Once you are satisfied with the block placement, join the blocks and squares in each row. Press seam allowances toward the plain squares.
4. Fussy-cut each of the 4 pheasant panels from the same part of the print, centering the pheasants. Hint, cut 2 panels lengthwise, and then cut 2 more panels lengthwise. There will be fabric leftover between panels.
5. Sew the 3 block rows between the 4 pheasant panels. Press the seam allowances toward the panels.

## Finishing the Quilt

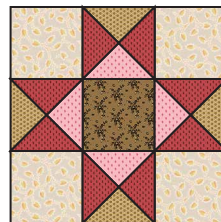
6. Layer the quilt with batting and backing and baste. Quilt in the ditch around block patches. Quilt the plain squares as you wish. Quilt around the printed motifs in the panels. Bind to finish the quilt.



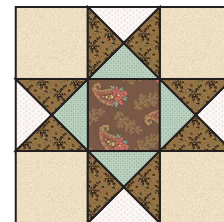
Make 6



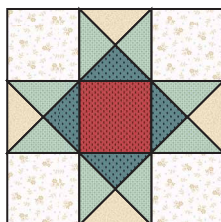
Make 6



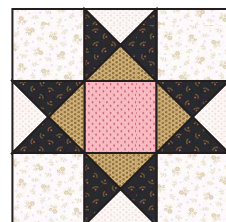
Make 6



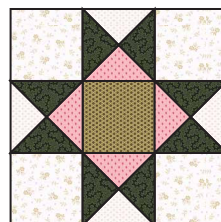
Make 6



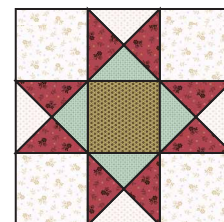
Make 6



Make 6

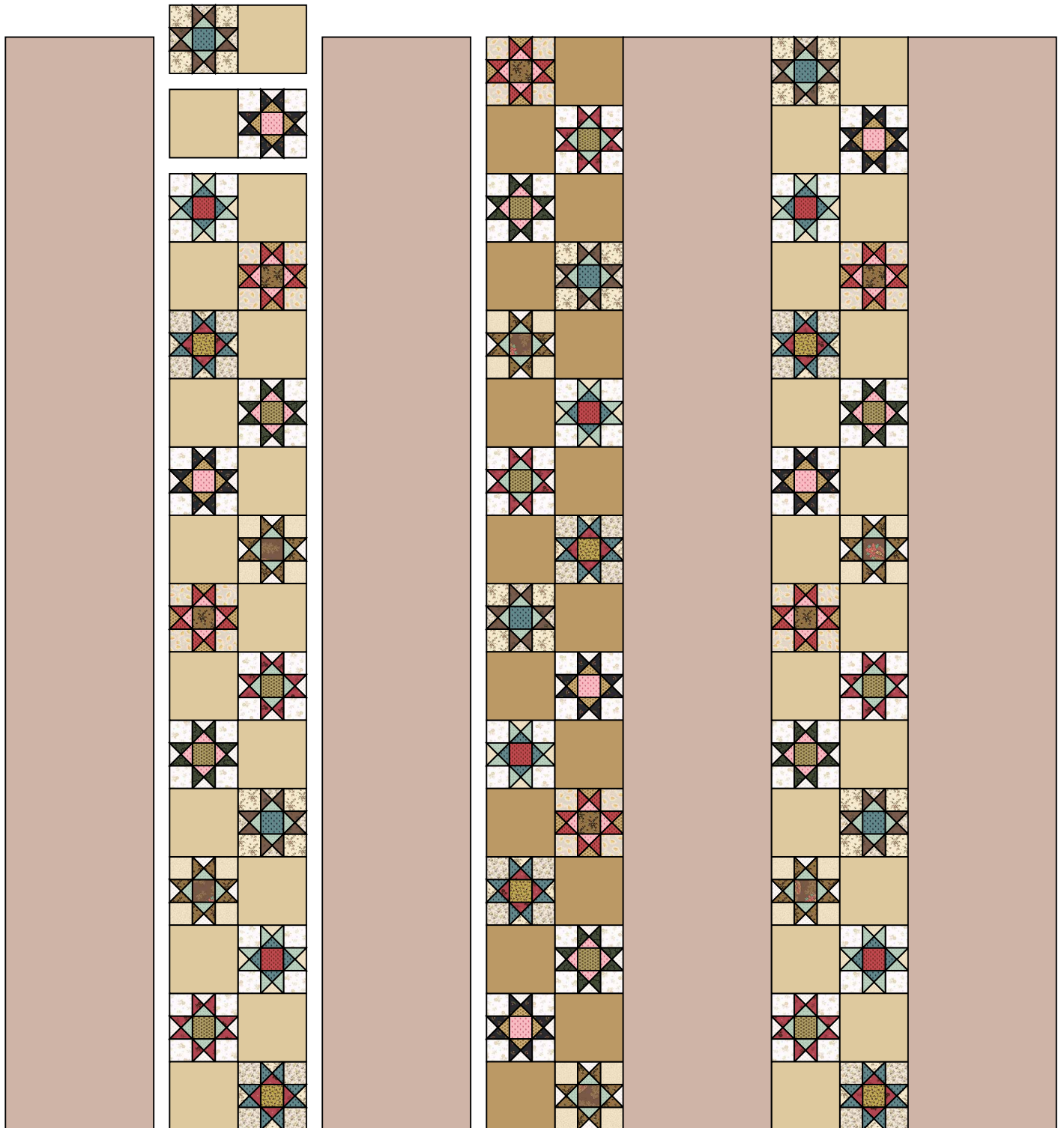


Make 6



Make 6

# Starry Paths Quilt



Quilt Diagram

# Pheasant & Traceries

BY Margo Krager



8292-N\*



8292-R



8293-N



8293-N1\*



8294-G



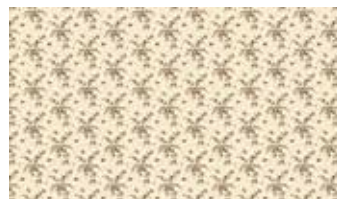
8294-N\*



8295-L\*



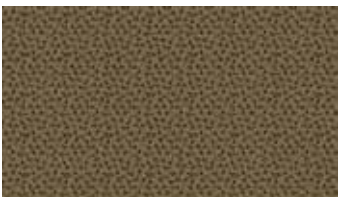
8295-N



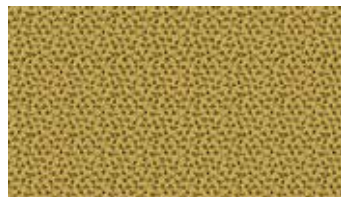
8296-L\*



8296-N\*



8297-N\*



8297-Y\*



8298-N\*



8298-Y\*



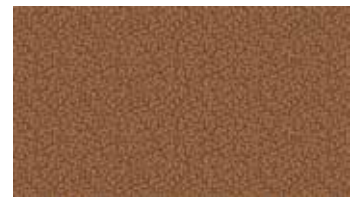
8299-N\*



8299-Y\*



8201-N



8201-O

Blend with fabrics from **Trinkits** by Kathy Hall



8144-N\*



8146-L\*



8146-R\*



8147-K\*



8148-G\*



8150-G\*



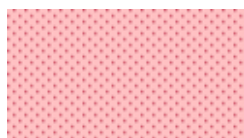
8151-L\*



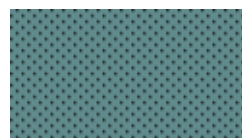
8153-N\*



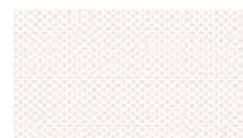
8154-R\*



8158-E\*



8158-T\*



8159-L\*

\*Indicates fabrics used in quilt pattern. Fabrics shown are 20% of actual size.

Free Pattern  
Download Available

1384 Broadway New York, NY 10018  
Tel. (800) 223-5678 • andoverfabrics.com

andover

makower uk  
*The Henley Studio*